

**SPECIAL CABLE
FOR X-PROG.**

MANUAL.

To read Mercedes-Benz EZS Motorola 912 or 9s12 CPU EEPROM in-circuit



You can use some programmers, for ex. **xProg**, **Rosfar**, **ETL** etc.

Almost all control points joined with service connector of EZS – black painted connector. We offer connection cable for EZS reading with **xProg programmer**:



You can make yourself cable for connection with other programmers.

Use the following wiring connection diagram:

1 - EXTAL

2 - GND

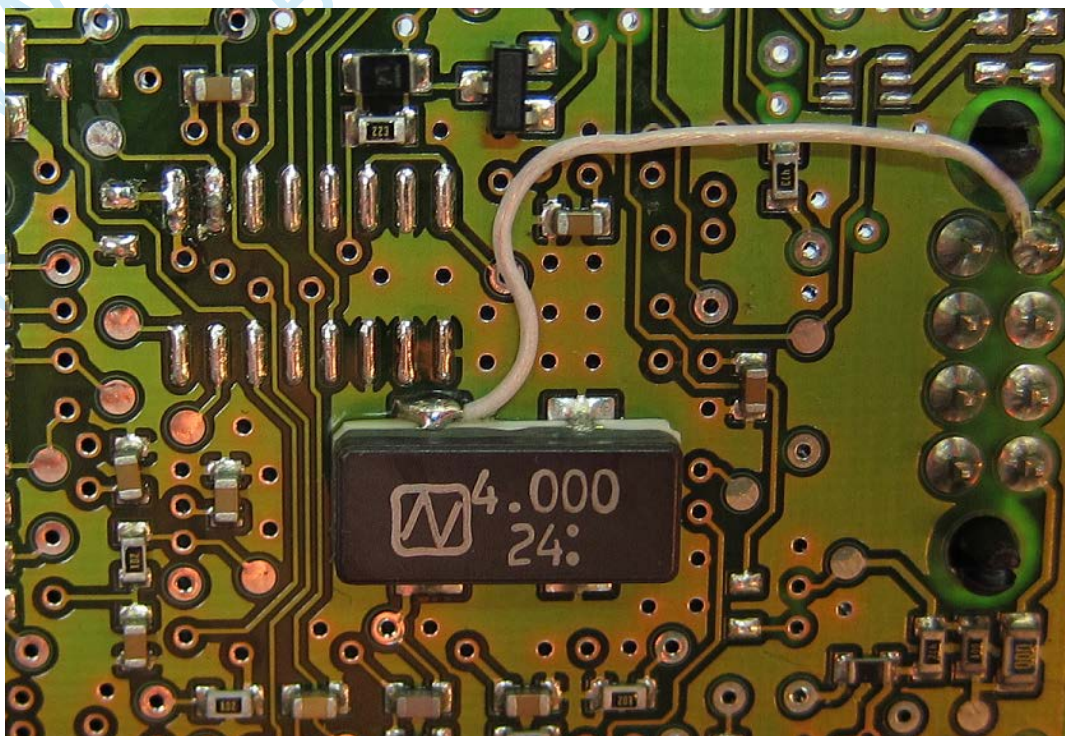
3 - RESET

4 - BKGD

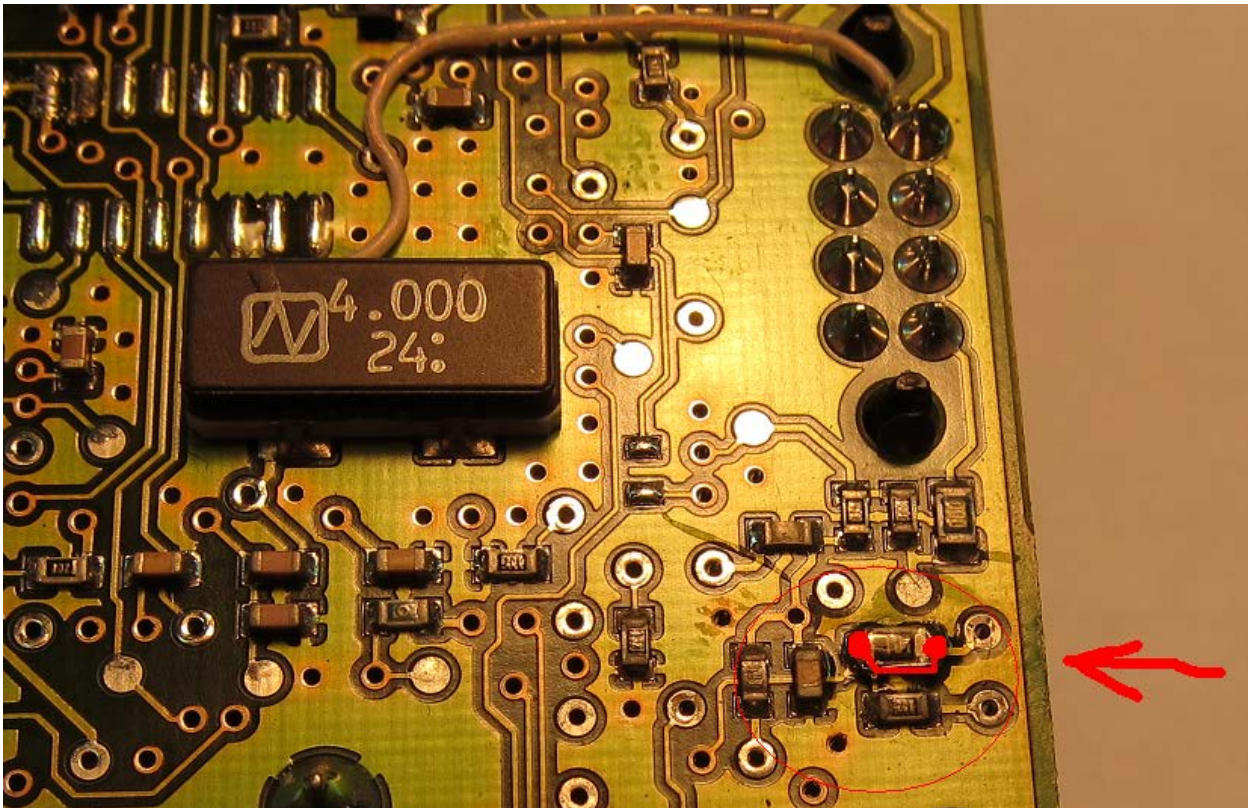
The EXTAL signal doesn't joint to service connector, so we have to make jump according to CPU type. If you see on board



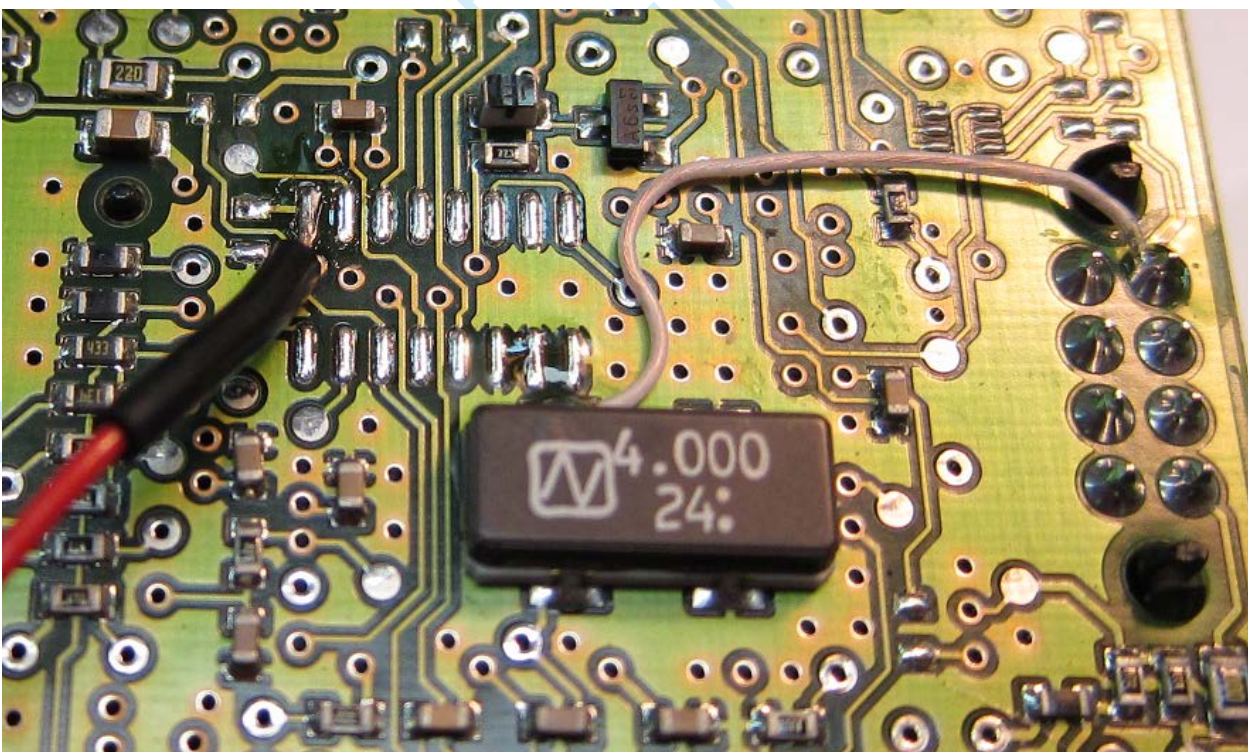
It means you have **912** CPU. Do make a jump like in picture (you can keep this jump even after reading/writing finishing).



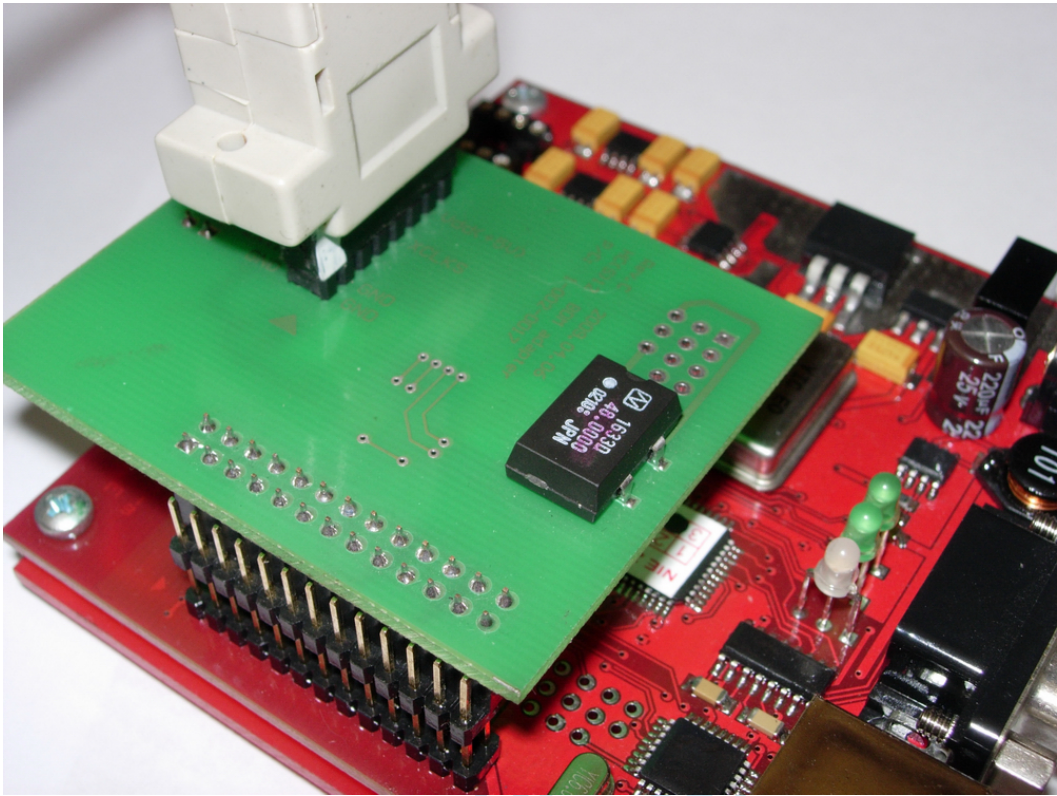
Find resistor on **RESET** line and make a jump on it for good communication. (you can keep this jump even after reading/writing finishing).



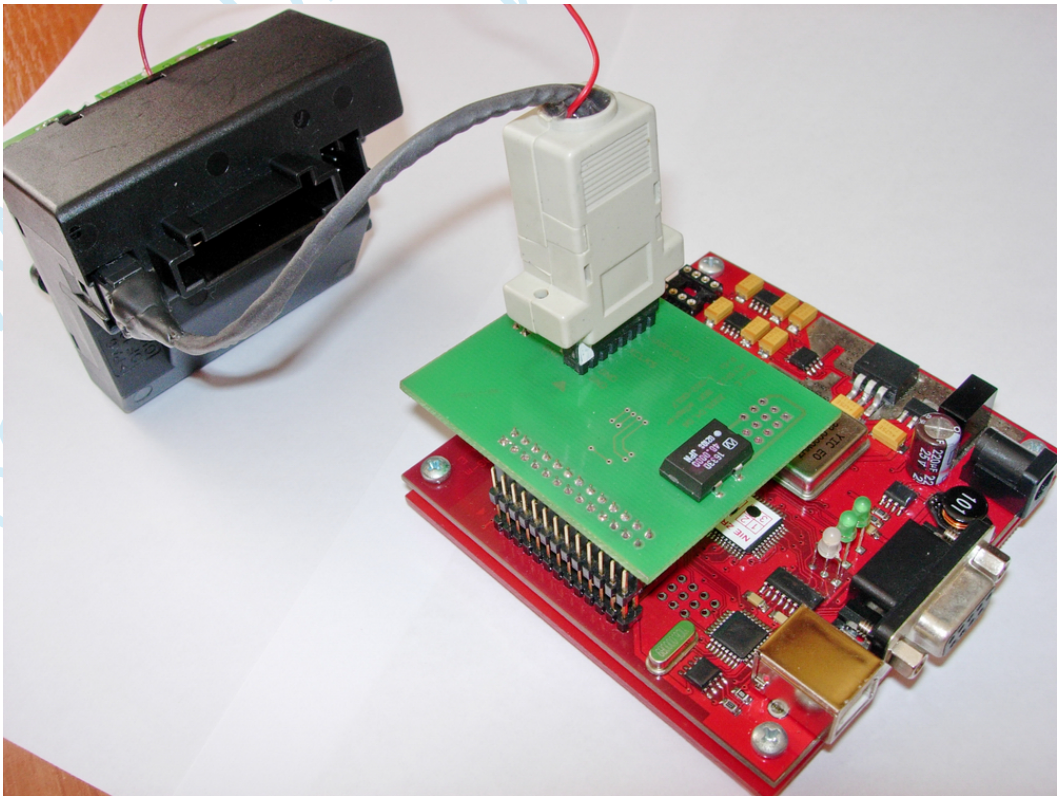
Then solder red wire of our cable for power supplying.



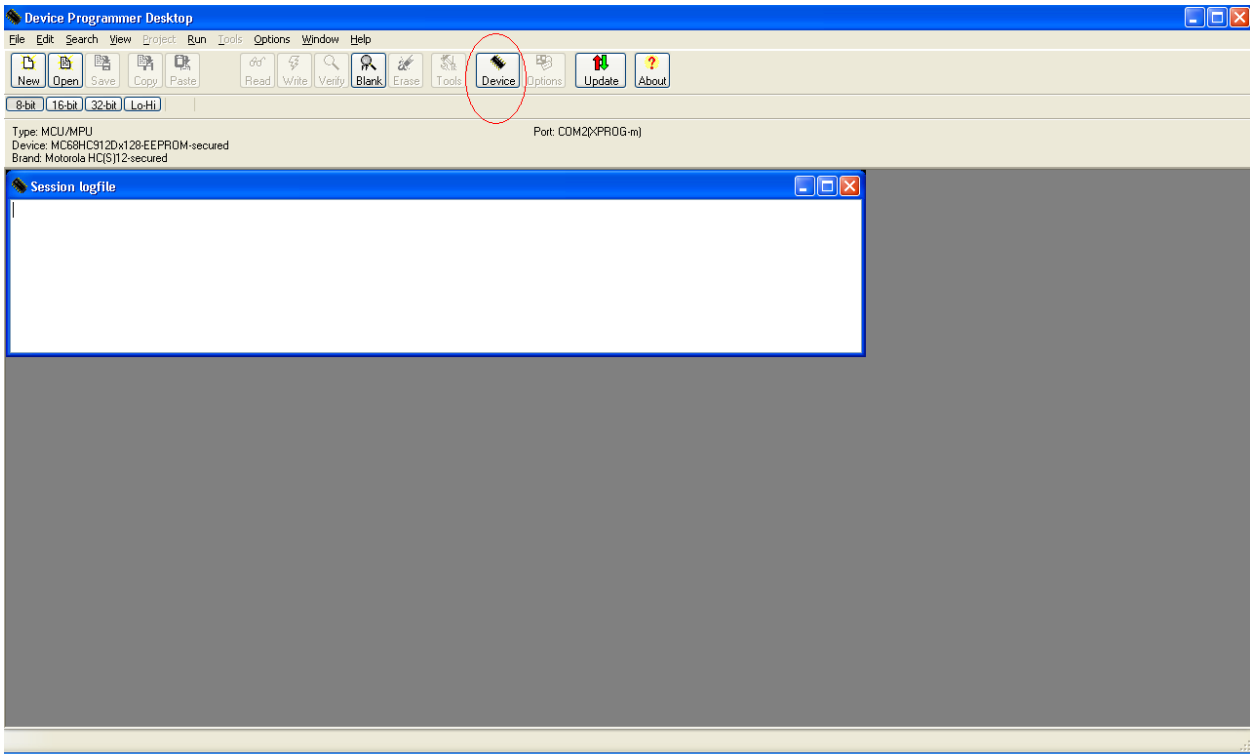
Now plug in the connector to **xProg programmer board** like in picture:



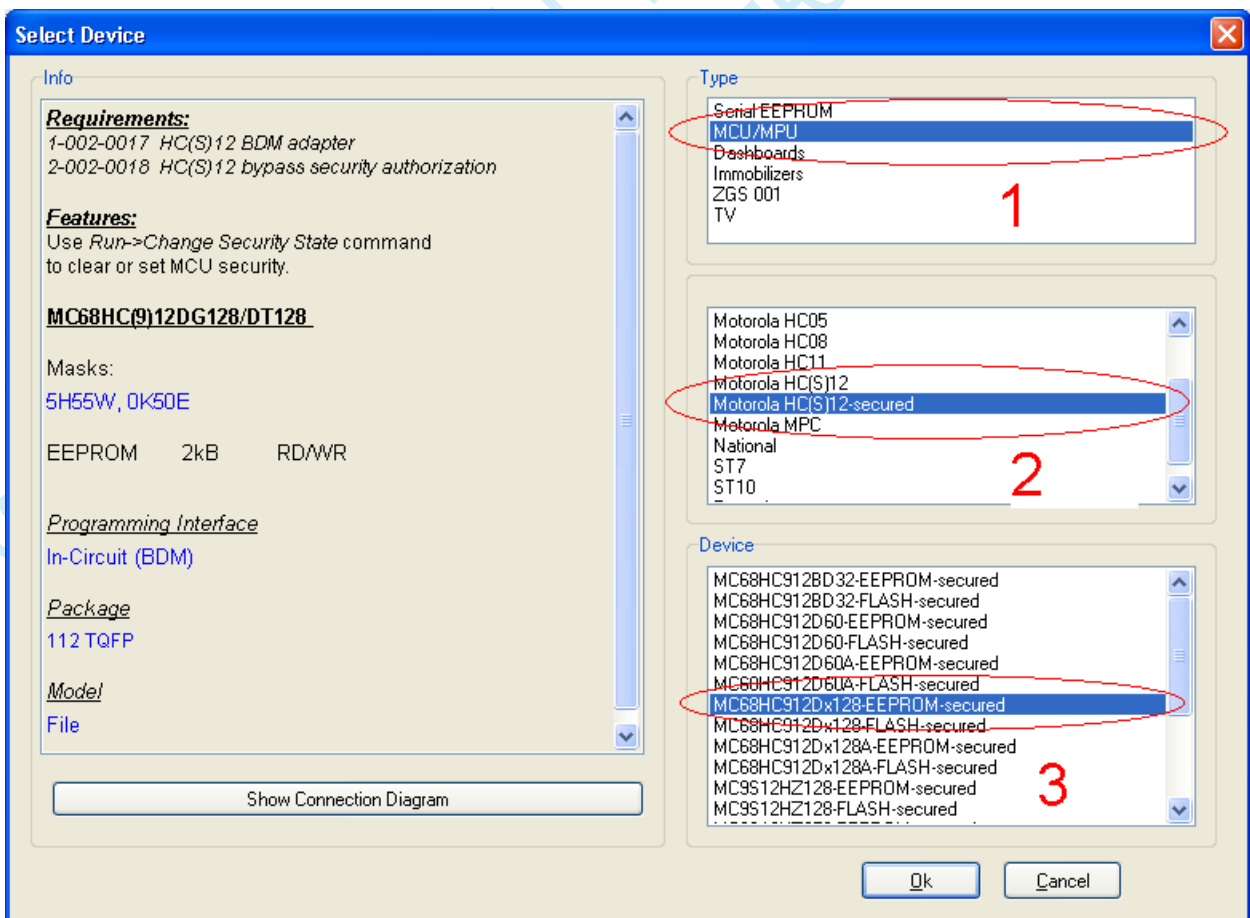
We recommend to mount the part of cover on to the EZS, then you have not a mistake while you connect cable to EZS.



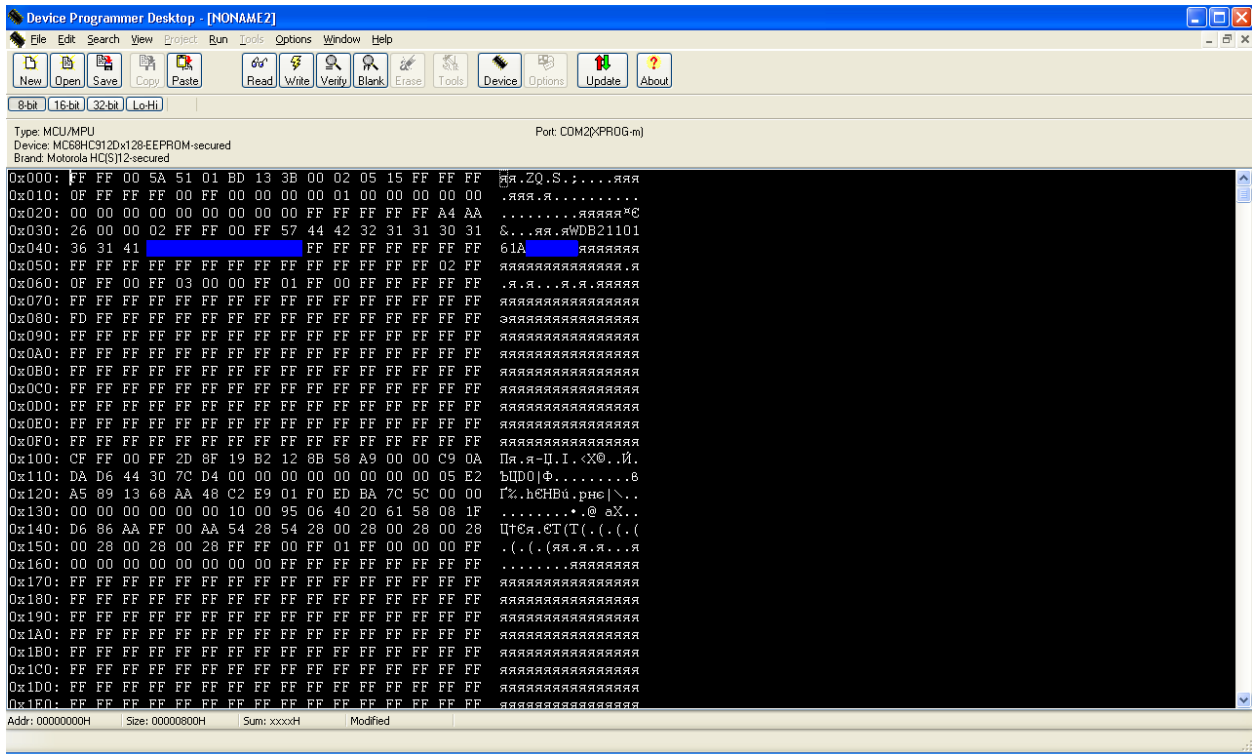
Start the programmer software and press DEVICE button.



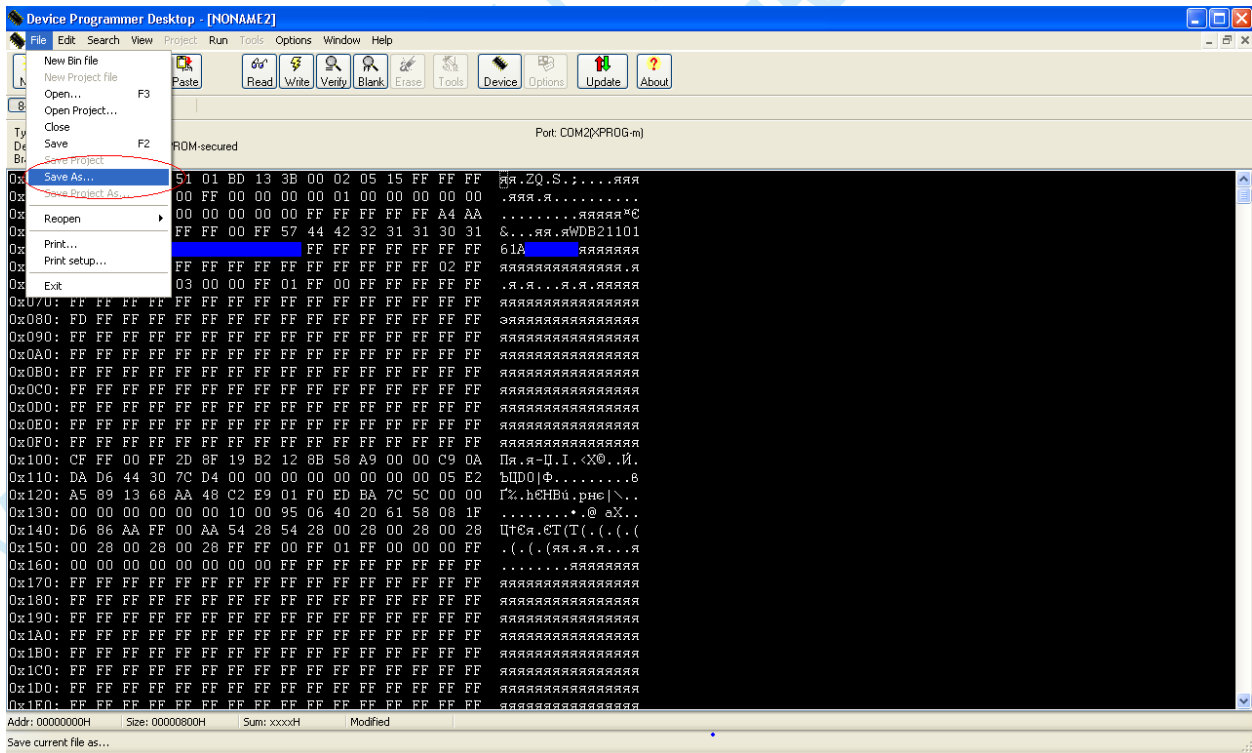
Choose the following:



You will see following picture (as sample)



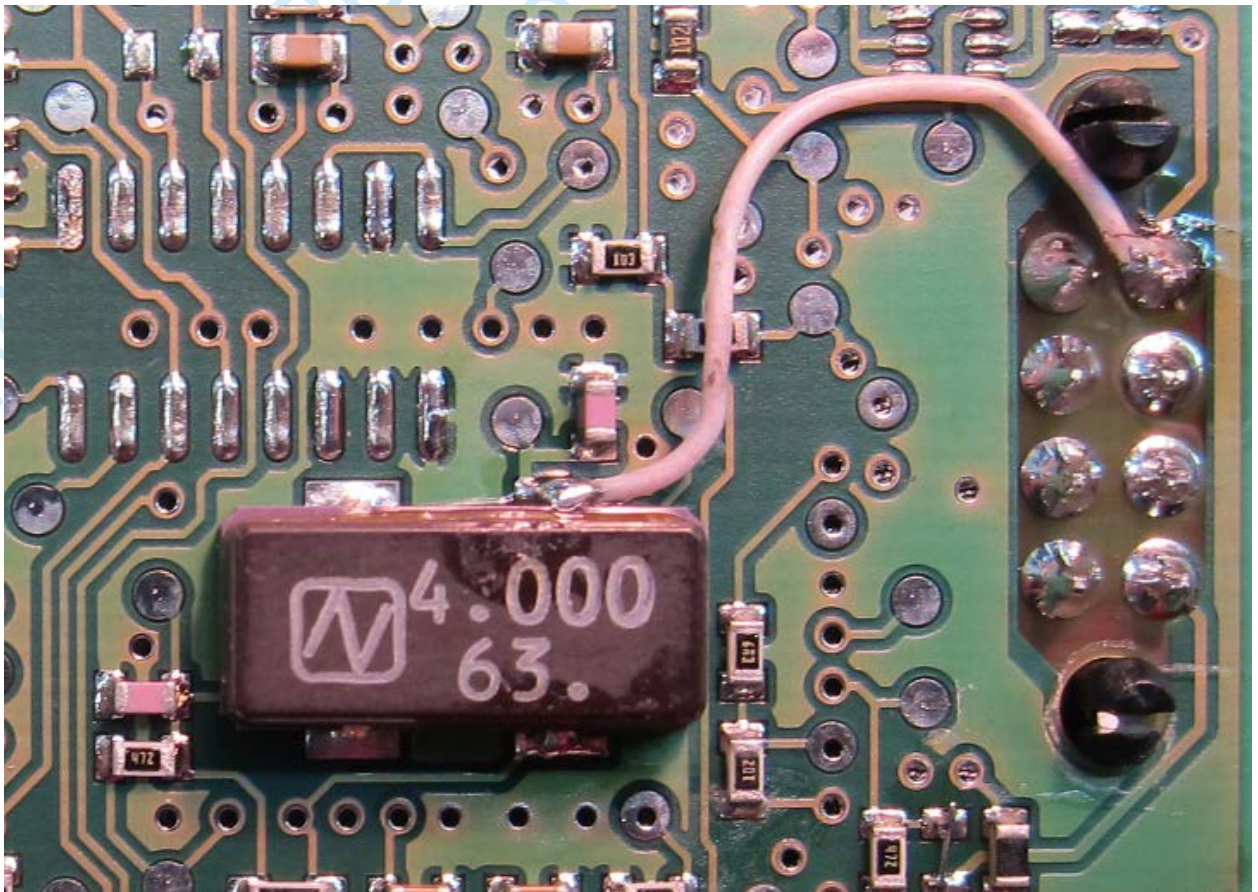
Save EEPROM file you have read.



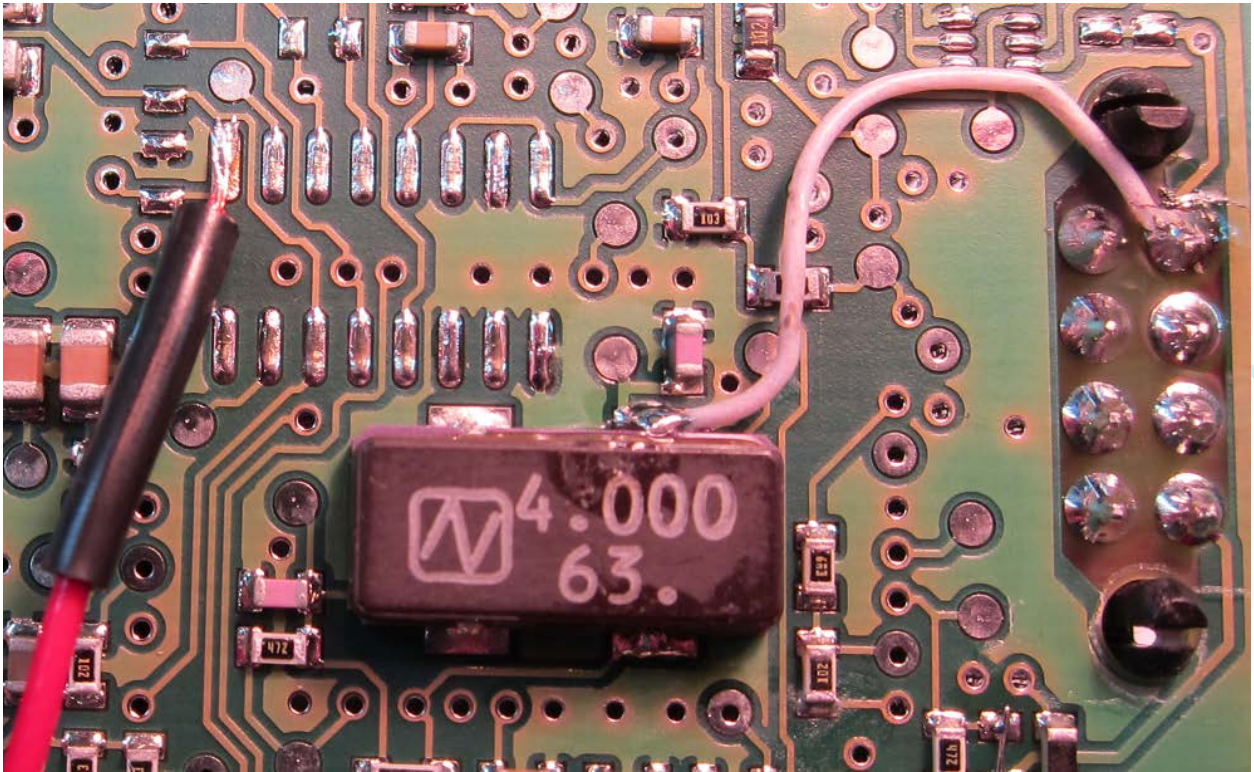
If you see on board



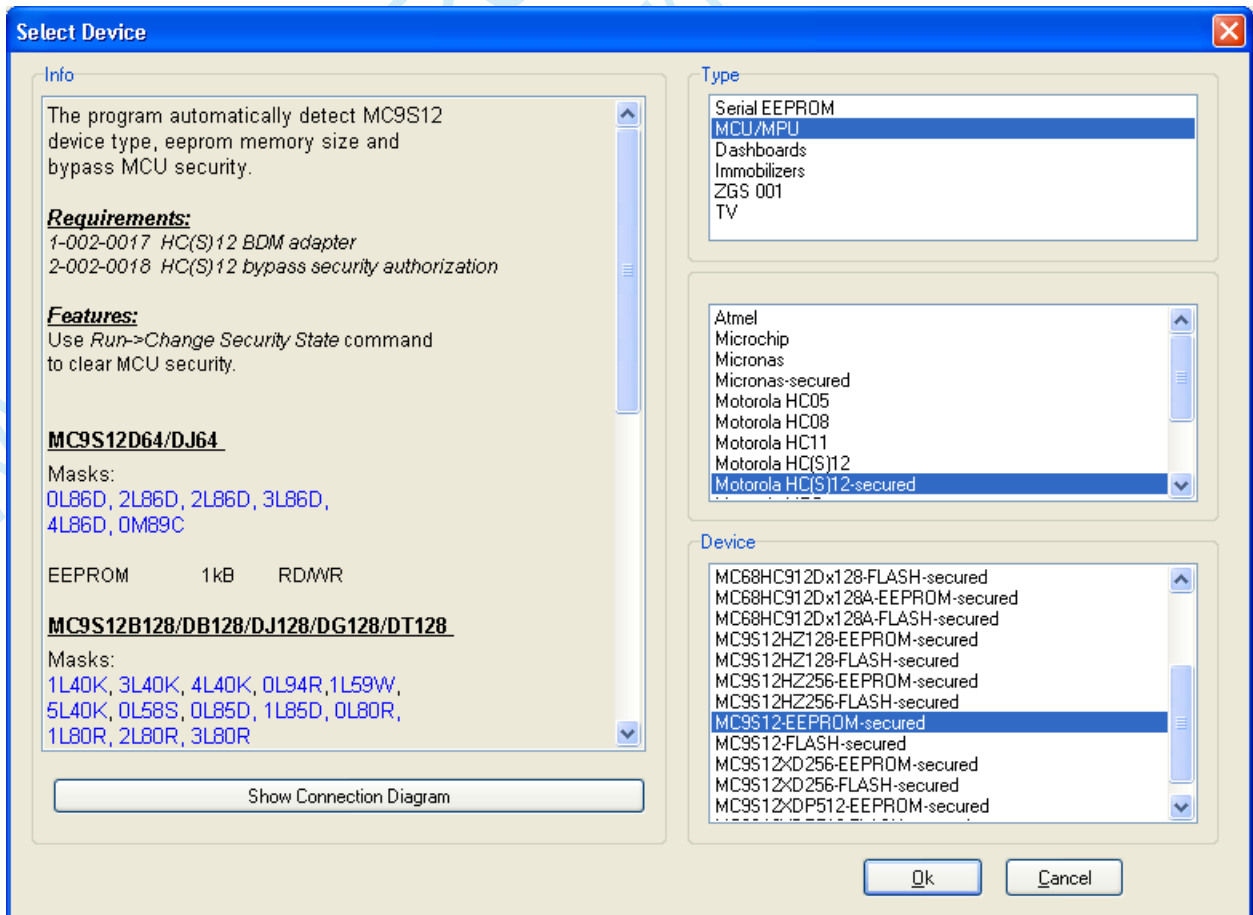
It means you have 9S12 CPU. Do make only one jump like in picture



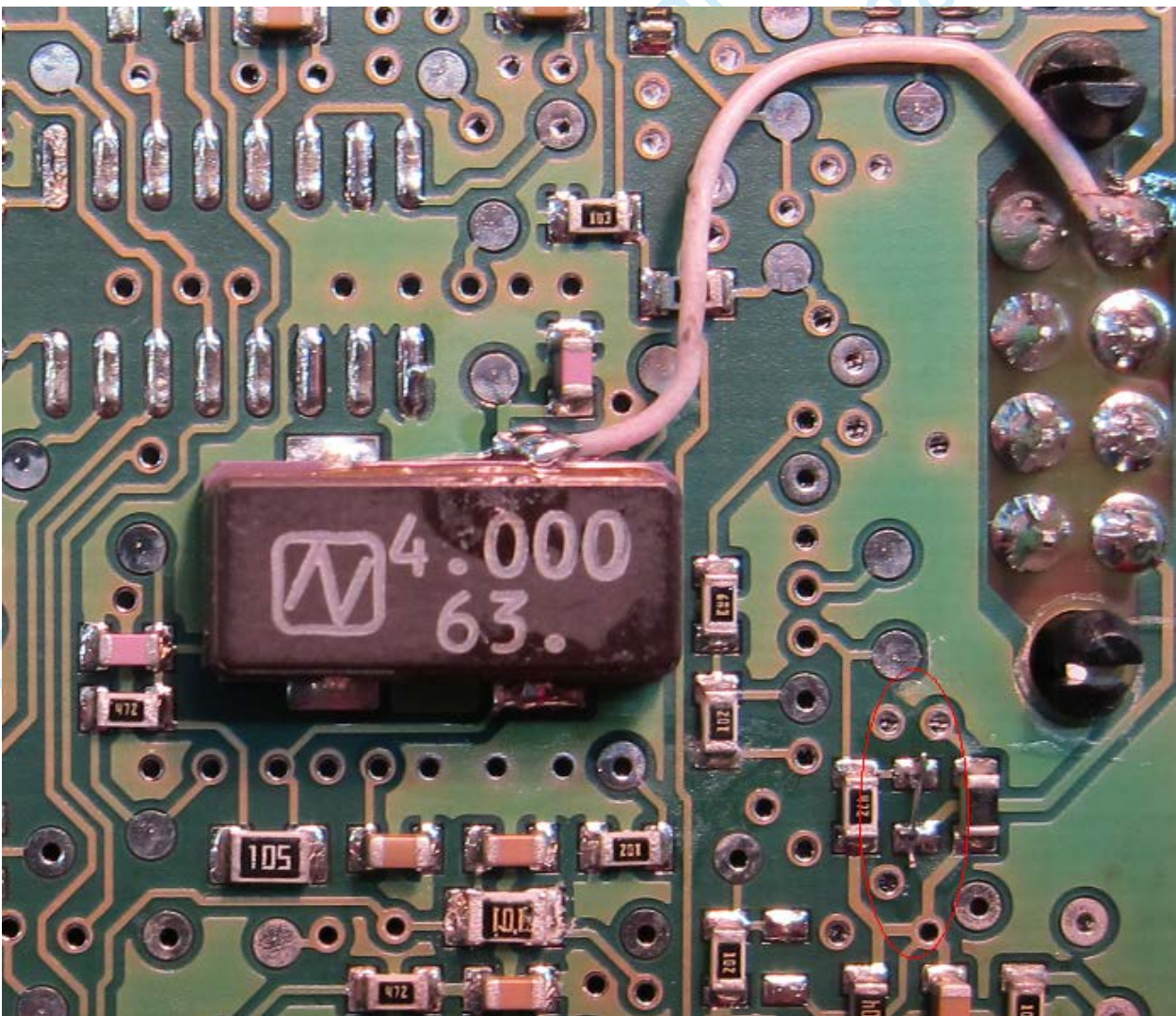
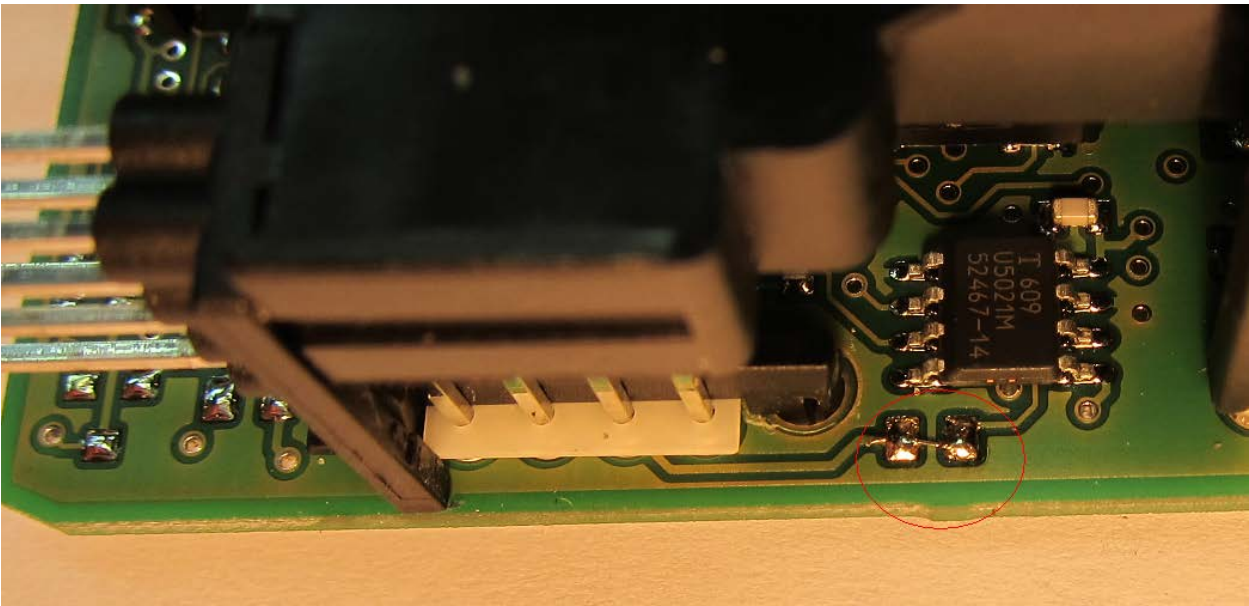
Then solder red wire of our cable for power supplying.



Then do the same job like with previous CPU type but remember about a difference when you choose microchip in programmer software.



Sometimes new board types with 9S12 CPU have not some jumps (it has zero resistance as usual). Make these jumps yourself.



You can keep these jumps after reading/writing, too.